

No.	Description	Date	No.	

PROJECT NAME
NEW MIXED USE
DEVELOPMENT

DRAWING TITLE
**PARKING 2 FLOOR
PLAN**

$$3'16'' = 1'0''$$

DRAWN BY JW	CHECKED DP
----------------	---------------

DATE	JOB NO.
02/14/21	0001

DRAWING NO.

A 3



900 McGill Road
Box 3010
Kamloops, BC
V2C 5N3
Tel: 250-828-5000
Fax: 250-374-6470



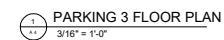
**ARCHITECTURAL
AND
ENGINEERING
TECHNOLOGY**

[illegible]

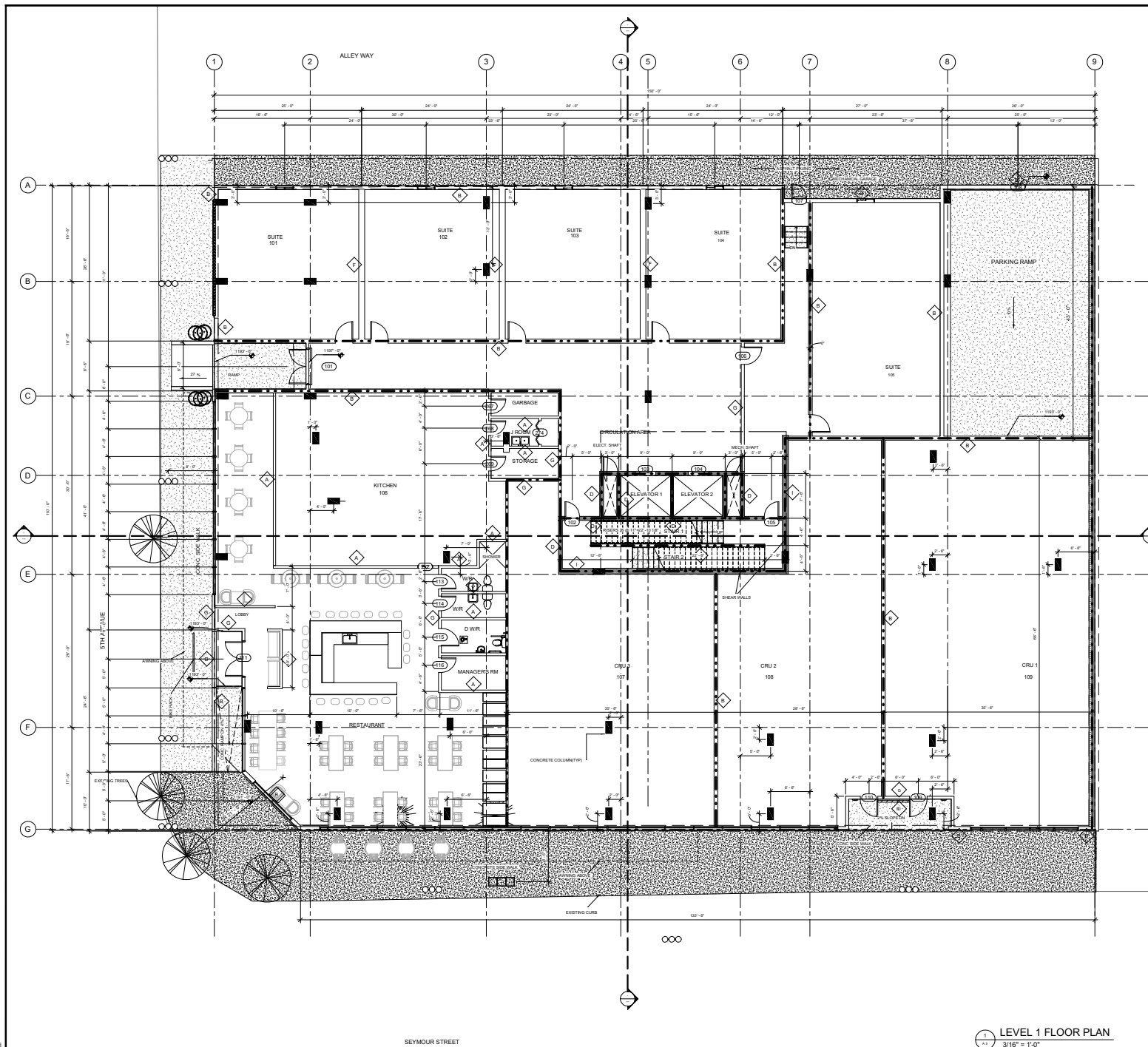
DRAWING TITLE
PARKING 3 FLOOR
PLAN

DATE	JOB NO.
02/14/21	0001

A 4



2023-05-14 6:57:34 PM



SYMBOL LEGEND

- SPOT ELEVATION
- PROJECT NORTH
- SLOPE ARROW
- DOOR TAG
- WALL TAG
- 2"X4 CONCRETE COLUMN
- DISABLED
- SHRUB
- DECIDUOUS BLUE BERRY 4.5M

OCCUPANCY LOAD

RESTAURANT FLOOR AREA=211.67 SQM/1.25CM PER PERSON
OCCUPANT LOAD IN RESTAURANT = 176 PERSONS

KITCHEN FLOOR AREA=116.34 SQM/9.3 SQM PER PERSON
OCCUPANT LOAD IN KITCHEN = 13 PERSONS

WALL SCHEDULE

NOTE: ALL WALLS TO BE TYPE A, UNLESS NOTED OTHERWISE

- TYPE A-1 PARTITION WALL
-1" OF GIB
-3.5" STEEL STUDS
-1" OF GIB
- TYPE B-1 EXTERIOR WALL
-1" OF GIB
-POLY CARBON BARBERS
-2 LAYERS 1/2" OF GIB
-1" MINERAL FIBRE INSUL. BETH STUDS
-1" OF PERIMETER INSULATION BREASTING
-1" OF EXTERIOR CONCRETE WALL, W/ PERIMETER CLIPS
-1" OF AIR SPACE
-HARDER SOUND
- TYPE C-1 CMU WALL
-4" OF CONCRETE MASONRY UNITS
- TYPE D-1 REINFORCED CONC. WALL
-8" CAST-IN-PLACE CONCRETE
- TYPE E-1 BRICK VENEER
- TYPE F-1 1/2" PARTY WALL
-2 LAYERS 1/2" OF GIB
-RESIDENT CHANNELS
-2 LAYERS 1/2" OF STEEL STUDS W/ 4" GAP
-2 LAYERS 1/2" OF MINERAL FIBRE INSUL.
-2 LAYERS 1/2" OF GIB
- 8" HALLWAY WALL AND PLUMBING WALL
-3.5" STEEL STUDS
-1" OF GIB
- 12" INSULATED CONCRETE WALL EXTERIOR
-1" OF GIB
-3.5" STEEL STUDS
-4" FIBRE INSULATION
-1" OF GIB
- 12" CONCRETE SHEAR WALL
-2 LAYERS 1/2" OF GIB
-RESIDENT CHANNELS
-2 LAYERS 1/2" OF STEEL STUDS W/ 4" GAP
-2 LAYERS 1/2" OF MINERAL FIBRE INSUL.
-2 LAYERS 1/2" OF GIB
- 45 MINUTES RATED WALL
- 1 HOUR RATED WALL
- 2 HOUR RATED WALL
- 3 HOUR RATED WALL

LEVEL 1 FLOOR PLAN
3/16" = 1'-0"

THOMPSON RIVERS UNIVERSITY
500 McGill Road
Box 3010
Kamloops, BC
V2C 3N3
Tel: 250-833-5000
Fax: 250-377-4533

ARCHITECTURAL AND ENGINEERING TECHNOLOGY

PROJECT NAME	DATE
NEW MIXED USE DEVELOPMENT	

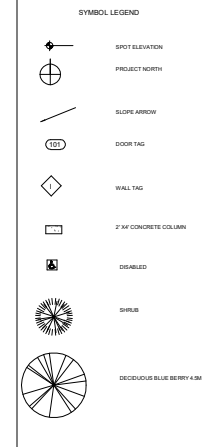
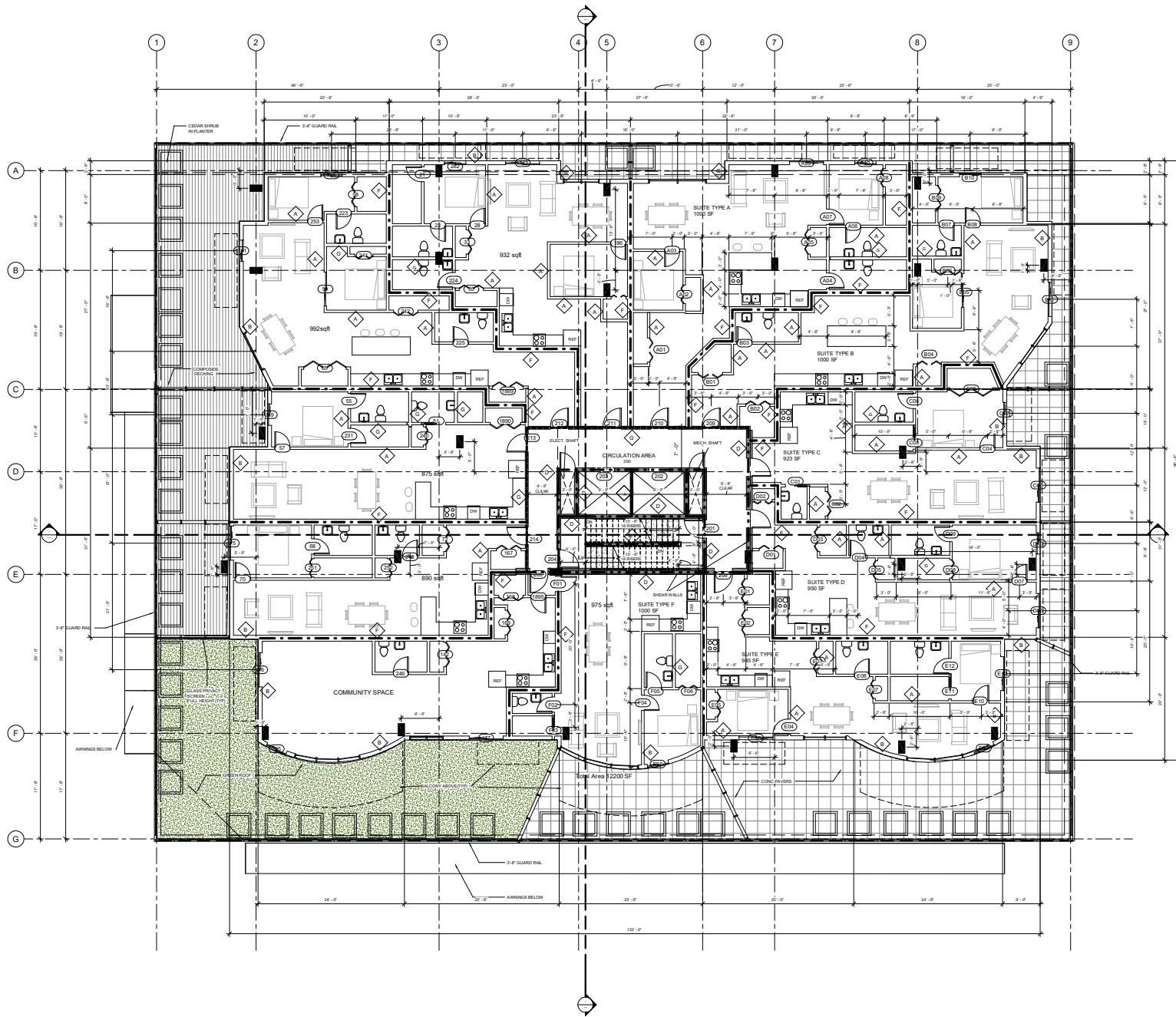
DESIGNED BY	DATE	CHECKED BY	DATE
JP		DP	
SD	02/14/21	SD	03/01

MAIN FLOOR PLAN

SCALE: 3/16" = 1'-0"

A 5

2023-05-14 6:47:37 PM



OCCUPANCY LOAD

NO OF ONE BED ROOM SUITS X NO OF RESIDENTIAL FLOORS X NO OF BED ROOMS X MAX PERSONS PER BED ROOM = $5'11'' \times 2' = 110$ PERSONS

NO OF TWO BED ROOM SUITS X NO OF RESIDENTIAL FLOORS X NO OF BED ROOMS X MAX PERSONS PER BED ROOM = $5'11'' \times 2' = 220$ PERSONS

TOTAL OCCUPANCY LOAD IN THE RESIDENTIAL TOWER: $110 \times 200' = 340$ PERSONS

WALL SCHEDULE

NOTE: ALL WALLS TO BE TYPE A UNLESS NOTED OTHERWISE

TYPE A: 8" PARTY WALL	TYPE B: 8" EXTERIOR WALL	TYPE C: 8" CMU WALL	TYPE D: 8" REINFORCED CONC. WALL	TYPE E: 4" BRICK VENEER	TYPE F: 12" PARTY WALL	TYPE G: 6" WALLWAY WALL AND PLUMBING WALL	TYPE H: 12" INSULATED CONCRETE WALL-EXTERIOR	TYPE I: 12" CONCRETE SHEAR WALL	TYPE J: 40 MINUTES RATED WALL	TYPE K: 1 HOUR RATED WALL	TYPE L: 2 HOUR RATED WALL	TYPE M: 3 HOUR RATED WALL
- 1" OF GWS	- 1" OF GWS	- 8" OF CONCRETE WASHY UNITS	- 8" OF CAST-IN-PLACE CONCRETE	- 4" OF BRICK VENEER	- 2 LAYERS OF GWS	- 6" OF GWS	- 12" OF GWS	- 12" OF GWS	- 40 MINUTES RATED WALL	- 1 HOUR RATED WALL	- 2 HOUR RATED WALL	- 3 HOUR RATED WALL
- 3.5" OF STEEL STUDS	- 1 LAYER OF STEEL STUDS	- 8" OF CONCRETE WASHY UNITS	- 8" OF CAST-IN-PLACE CONCRETE	- 4" OF BRICK VENEER	- 2 LAYERS OF GWS	- 6" OF GWS	- 12" OF GWS	- 12" OF GWS	- 40 MINUTES RATED WALL	- 1 HOUR RATED WALL	- 2 HOUR RATED WALL	- 3 HOUR RATED WALL
- 1" OF MINERAL FIBRE INSUL. WITH GWS	- 1" OF MINERAL FIBRE INSUL. WITH GWS	- 8" OF CONCRETE WASHY UNITS	- 8" OF CAST-IN-PLACE CONCRETE	- 4" OF BRICK VENEER	- 2 LAYERS OF GWS	- 6" OF GWS	- 12" OF GWS	- 12" OF GWS	- 40 MINUTES RATED WALL	- 1 HOUR RATED WALL	- 2 HOUR RATED WALL	- 3 HOUR RATED WALL
- 1" OF EXTERIOR SEM-RIGID INSUL. W/ FIREGLASS CLIPS	- 1" OF EXTERIOR SEM-RIGID INSUL. W/ FIREGLASS CLIPS	- 8" OF CONCRETE WASHY UNITS	- 8" OF CAST-IN-PLACE CONCRETE	- 4" OF BRICK VENEER	- 2 LAYERS OF GWS	- 6" OF GWS	- 12" OF GWS	- 12" OF GWS	- 40 MINUTES RATED WALL	- 1 HOUR RATED WALL	- 2 HOUR RATED WALL	- 3 HOUR RATED WALL
- 1" OF AIRSPACE	- 1" OF AIRSPACE	- 8" OF CONCRETE WASHY UNITS	- 8" OF CAST-IN-PLACE CONCRETE	- 4" OF BRICK VENEER	- 2 LAYERS OF GWS	- 6" OF GWS	- 12" OF GWS	- 12" OF GWS	- 40 MINUTES RATED WALL	- 1 HOUR RATED WALL	- 2 HOUR RATED WALL	- 3 HOUR RATED WALL
- 1" OF AIRSPACE	- 1" OF AIRSPACE	- 8" OF CONCRETE WASHY UNITS	- 8" OF CAST-IN-PLACE CONCRETE	- 4" OF BRICK VENEER	- 2 LAYERS OF GWS	- 6" OF GWS	- 12" OF GWS	- 12" OF GWS	- 40 MINUTES RATED WALL	- 1 HOUR RATED WALL	- 2 HOUR RATED WALL	- 3 HOUR RATED WALL

LEVEL 2 - FLOOR PLAN

3/16" = 1'-0"

THOMPSON RIVERS UNIVERSITY
900 McGill Road
Box 3010
Kamloops, BC
V2C 3N3
Tel: 250-833-5000
Fax: 250-371-6133

ARCHITECTURAL AND ENGINEERING TECHNOLOGY

PROJECT NAME	NEW MIXED USE DEVELOPMENT
ISSUED FOR	UPPER FLOOR PLAN
SCALE	3/16" = 1'-0"
DESIGNED BY	DP
CHECKED BY	DP
DATE	03/14/21
REVISION	0001

A 6